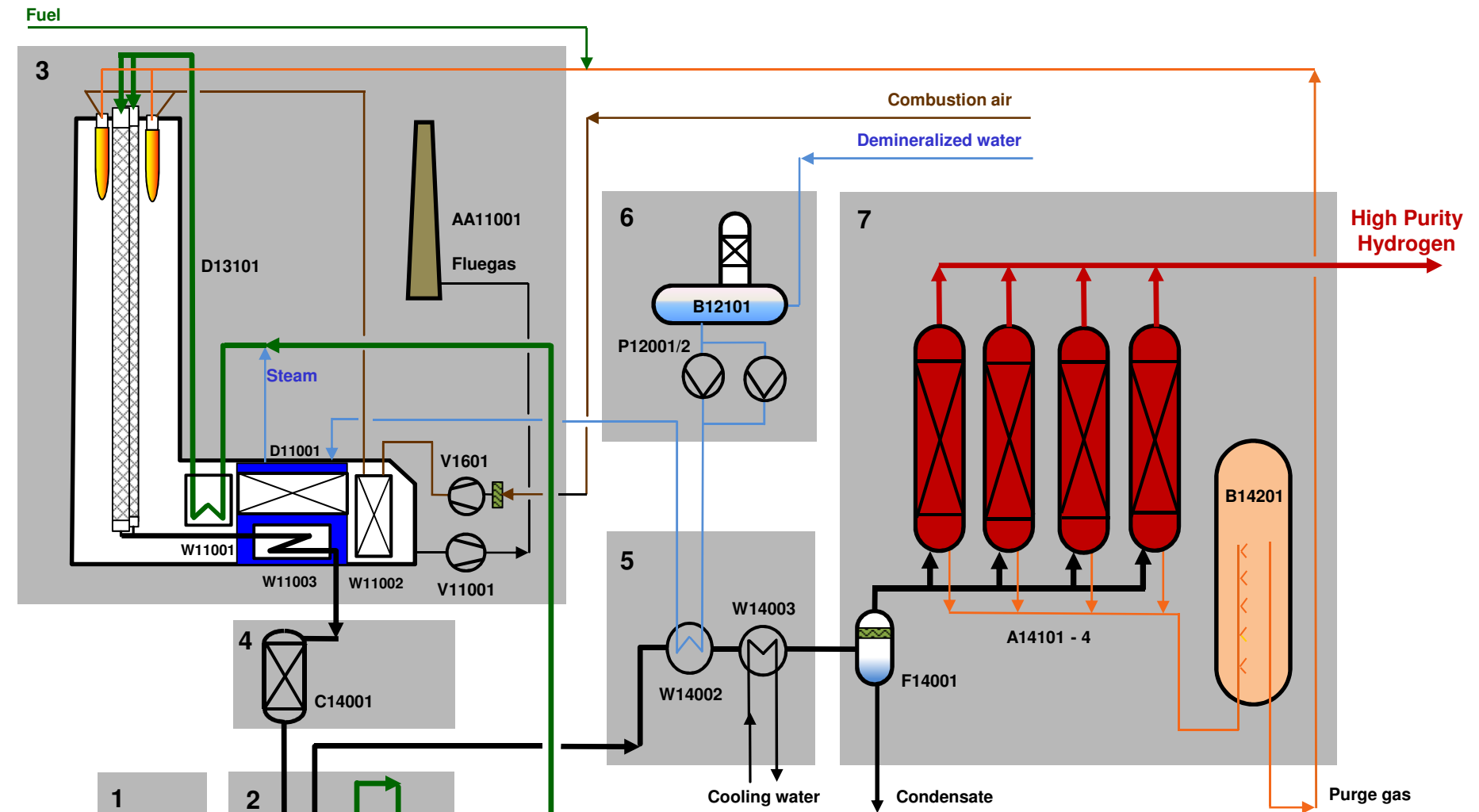


Basic process flow sheet - Steam-reforming plant



- 1: Mixing of natural gas with H₂-recycle
- 2: Feed pretreatment/Desulphurization
- 3: Reforming and steam generation
- 4: HT-CO conversion
- 5: Heat exchanger unit
- 6: Pretreatment of boiler feed water
- 7: Purification system (Pressure-Swing-Adsorption system)